

CasePlayer2: Transfer / Copy Project Settings



GAIO TECHNOLOGY CO.,LTD.



How to transfer/copy a CasePlayer2 Project's settings

■ There are **2 methods** to transfer or copy a CasePlayer2 project's settings to reuse in another project:

1. Direct copy of the Project directory
2. Export/Import of the Configuration Files



1. Direct copy of the Project Directory

■ It's possible to re-use a project's settings by making a copy of the project's directory as follows:

1. Create a "Master Project":

- Select a project whose analysis completed successfully
- Remove all the source code files and generated documents from the project
- Copy the project's directory

2. Paste the "Master Project" directory to another location

Note: The project name can not be changed



2. Export the Configuration Files 1/4

- In CasePlayer2, Configuration Information can be split in 4 categories:

A: Overall Information

- Document Generation, Preprocessor settings, Document Templates, etc.

B: C Code Analysis Information

- C Option Parameter File (Keyword definitions)
 - » (Preprocessor settings, including #include files, are in A: Overall info)

C: Assembly Analysis Information

- Assembly Parameter File (Instructions definitions)
 - » Specific to each processor
 - » Only required when analyzing Assembly code

D: MISRA-C Check Information

- Ignored Rules and Display settings

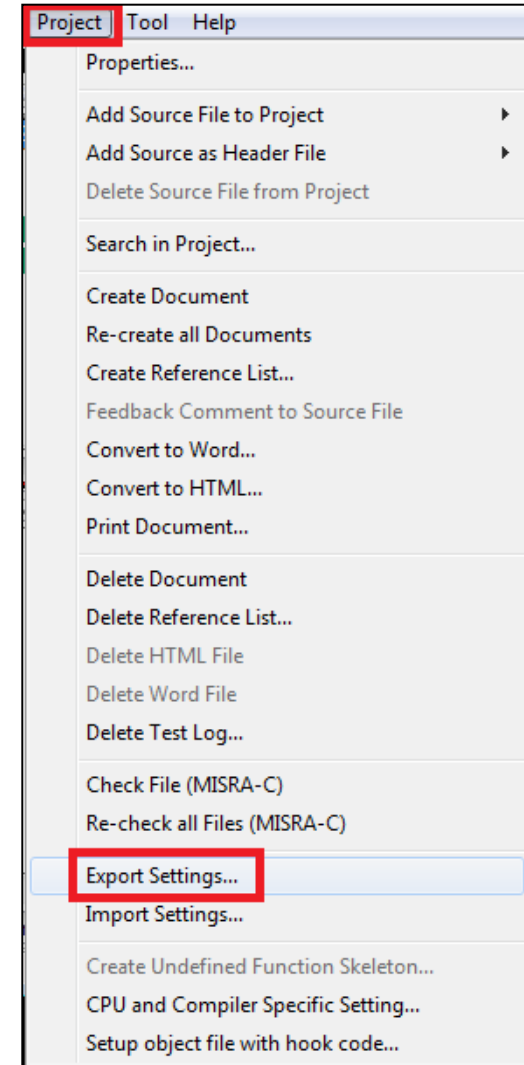
2. Export the Configuration Files 2/4

■ How to export Project Overall Configuration:

What is exported:

Project Configuration file *.vopt

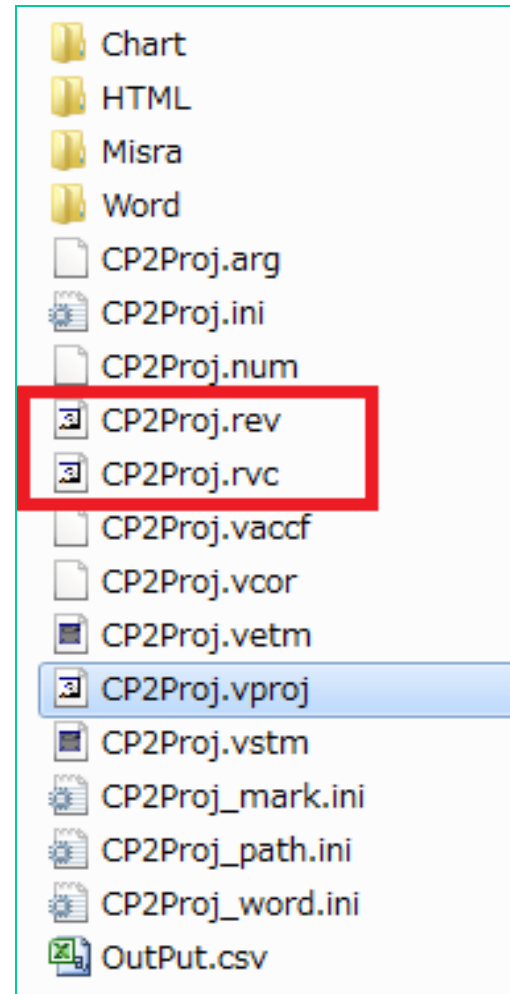
- Analysis settings
- Preprocessor settings
- KANJI Code (encoding) settings
- Module Structure Diagram settings
- Resource Customization
- Index Customization
- Print Settings
- Page Layout setting
- Template Customization settings
- Cover Page settings
- HTML/ Word Conversion settings
- MISRA-C Checker settings
- “Other” settings



2. Export the Configuration Files 3/4

How to export C and Assembly Analysis settings, MISRA-C Checker settings:

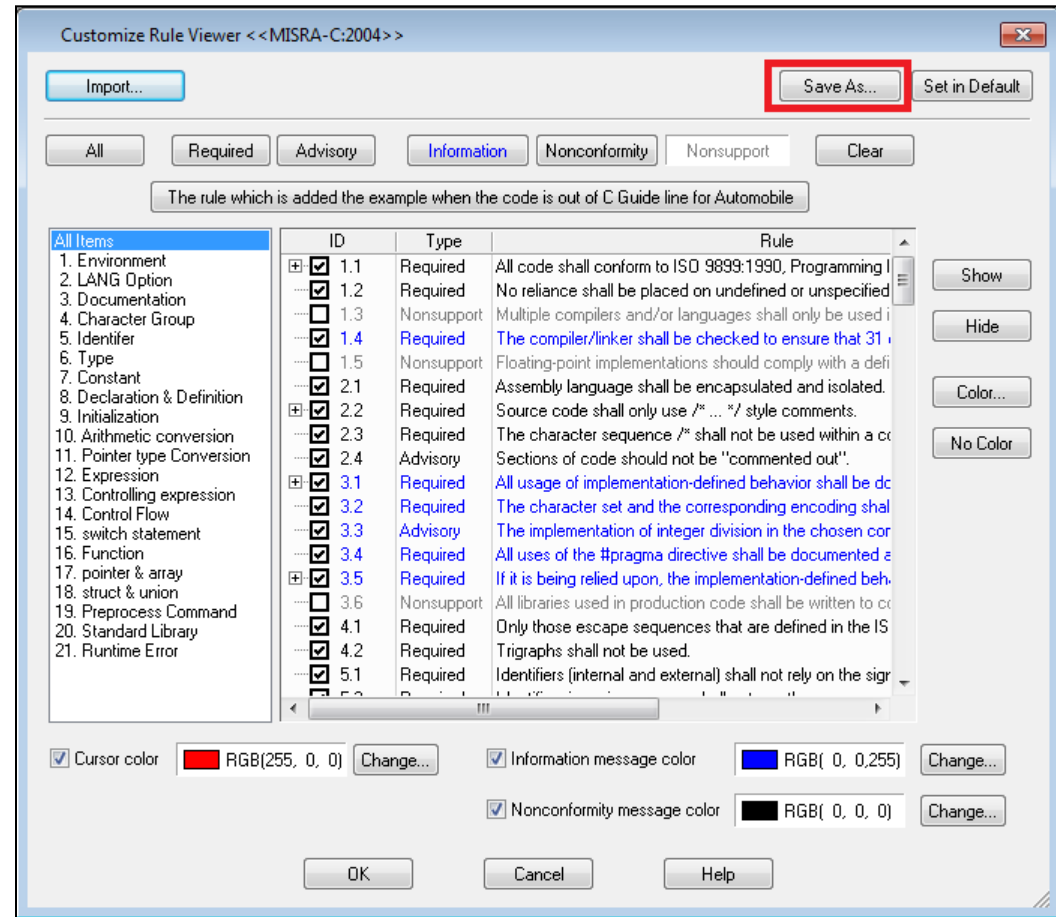
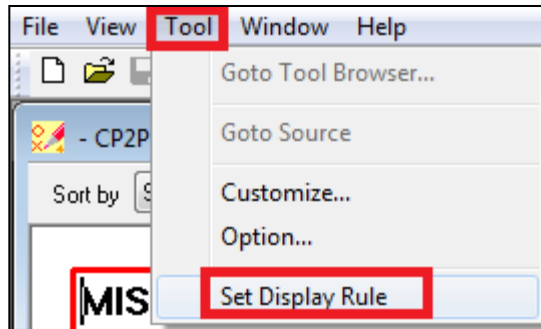
1. Assembly Option Parameter file
 - *.rev file in the project directory
2. C Option parameter file
 - *.rvc file in the project directory
3. MISRA-C Checker settings
 - Ignored rules, display settings
 - » *.gmrv for MISRA-C:1998
 - » *.gmry for MISRA-C:2004
 - See details on next page



2. Export the Configuration Files 4/4

■ Import/Export MISRA-C Checker settings:

- In the MISRA-C Report window: Tool -> Set Display Rule

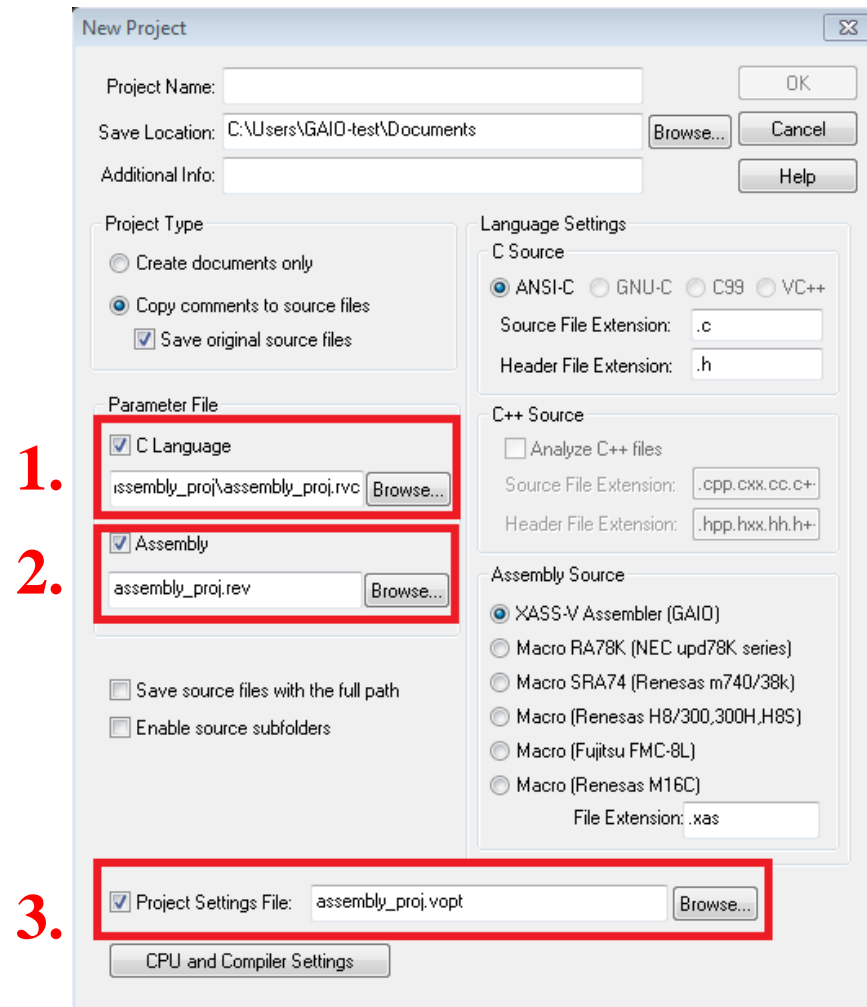


- Save ignored rules, display settings in:
 - *.gmrsv for MISRA-C:1998
 - *.gmrv for MISRA-C:2004with the "Save as..." button
- Import with "Import" button

2. Import the Configuration Files

■ How to import Overall, C and Assembly Parameter settings when creating a new project

1. C Option parameter file (*.rvc)
2. Assembly Option Parameter file (*.rev)
3. Project Overall Configuration (*.vopt)





END

GAIO TECHNOLOGY CO.,LTD.

GAIO Technology CO., LTD.
3-12-8, Nihombashi-Ningyo-cho Chuo-ku,
Tokyo, 〒103-0013, Japan

TEL: (03) 3662-3041
FAX: (03) 3662-3043
Email: info@gaio.co.jp

- * Company names and product names that appear in this presentation are trademarks of their respective company.
- * Unauthorized distribution or duplication of this presentation material is prohibited.

**For more information visit
<http://www.gairo.com/>**